

REINFORCING STEEL SCHEDULE (A.S.T.M. A-615 GRADE 60)						
COLD FORM BARS TO INSIDE DIMENSIONS			A			
SYM	QTY	SIZE	LOCATION, DIRECTION	A	B	WGT
ST1	28	#6	FOOTERS, LATERAL	10'-0"		421
ST2	4	#5	ENDS, LATERAL	10'-0"		42
	20		APPROACHES, LATERAL			209
ST3	22	#5	APPROACHES, LONG.	9'-6"		218
L1	22	#5	APPROACH TO END TIES	2'-3"	2'-7"	112

L1 IS GIVEN WITHOUT RISER BASEPLATES. DIMENSION "B" AND WEIGHT WILL VARY WITH THE HEIGHT OF RISERS USED, AS FOLLOWS:

NO RISERS	L1-B	WGT
3" RISERS	2'-7"	112
6" RISERS	2'-10"	118
	3'-1"	123

MATERIAL SUMMARY * (INCLUDES FOOTERS & APPROACHES) (DOES NOT INCLUDE SCALE DECK) (ASSUMES NO RISER BASEPLATES)	FOOTER DEPTH: "X" INCHES (24 INCH MINIMUM)				
	24	36	48	60	72
CONCRETE (CU. YDS.)	21	26.5	33	39	45
REINFORCING STEEL (LBS)	1002				

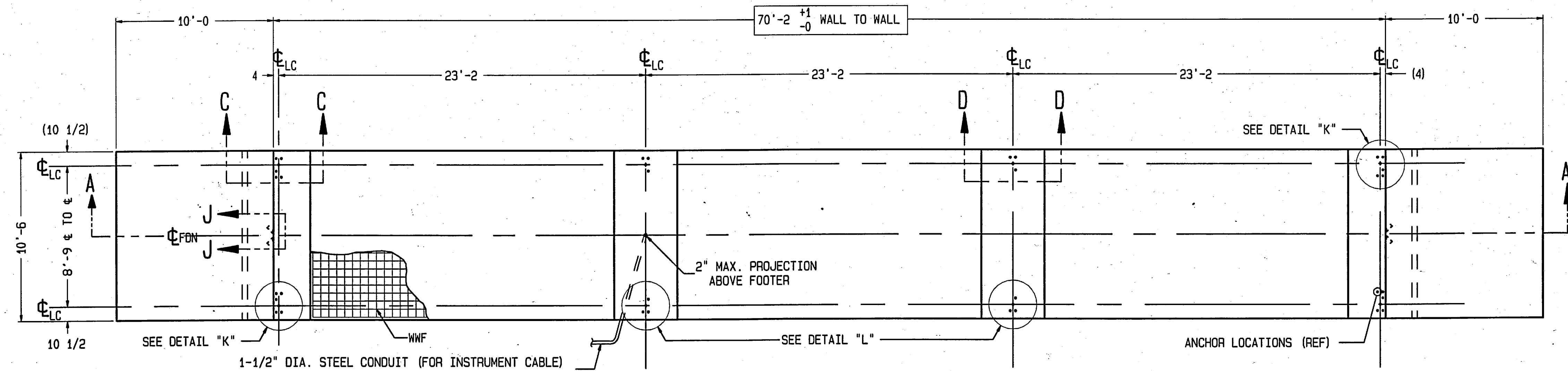
* IF OPTIONAL WASHOUT SLABS ARE USED, ADD:
610 SQ. FT. OF WWF: 6x6_M1.4xW1.4
7.5 CU. YD. OF CONCRETE.

NOTES:

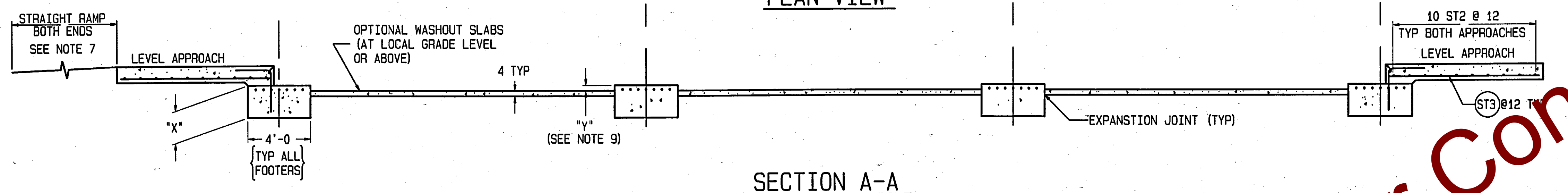
- 1) FOUNDATION REQUIRES MINIMUM 3000 PSI STRENGTH CONCRETE AT 28 DAYS WITH 5-7% AIR ENTRAINMENT. SPECIFICATIONS FOR SCALE DECK CONCRETE IS FOUND ON CORRESPONDING GENERAL LAYOUT DRAWING.
- 2) USE MINIMUM 60KSI YIELD DEFORMED REINFORCING STEEL. REBAR MINIMUM DEPTH OF COVER SHOULD BE IN ACCORDANCE WITH THE LATEST ACI BUILDING CODE REQUIREMENTS FOR STRUCTURAL CONCRETE (ACI 318-SECTION 7.7) UNLESS OTHERWISE SPECIFIED.
- 3) FOUNDATION REQUIRES 2500 PSF RATED SOIL FOR HIGHWAY TRUCK APPLICATIONS.
- 4) TOP OF CONCRETE AT BASEPLATE LOCATIONS TO BE LEVEL AND IN ONE PLANE $\pm 1/8"$
- 5) DIAGONAL MEASUREMENTS ENDWALL TO ENDWALL MUST BE EQUAL WITHIN $1/2"$.
- 6) BASEPLATE ANCHORS TO BE SUPPLIED BY METTLER-TOLEDO. USE BASEPLATES AS TEMPLATES TO LOCATE ANCHORS DURING SCALE INSTALLATION.
- 7) RAMP LENGTH: -PER LOCAL REGULATIONS
-1/2" SLOPE PER FOOT TYPICAL
- 8) BOTTOM OF FOOTER MUST BE BELOW LOCAL FROSTLINE.
- 9) FOOTER HEIGHT "Y" CAN BE VARIED TO SUIT LOCAL CLEARANCE REQUIREMENTS. TOP OF FOOTER AT GRADE LEVEL, I.E. FLUSH WITH WASHOUT SLABS, PROVIDES STANDARD 4" CLEARANCE BETWEEN BOTTOM OF WEIGHBRIDGE AND WASHOUT SLABS.
- 10) OPTIONAL: 6" OF GRAVEL MAY BE USED UNDER APPROACHES TO IMPROVE DRAINAGE.
- 11) CONTRACTOR SUPPLIES:
 - EXCAVATION
 - CONCRETE AND FORMS
 - REINFORCING STEEL
 - 1 1/2" DIA CONDUIT
 - CURB ANGLE ASSEMBLIES
 - BUMPER PLATE ASSEMBLIES (VIEWS J-J & N-N)

DRAWING IS TO SCALE ONLY WHEN BORDER MEASURES 22-7/8" X 35" (FULL SIZE)

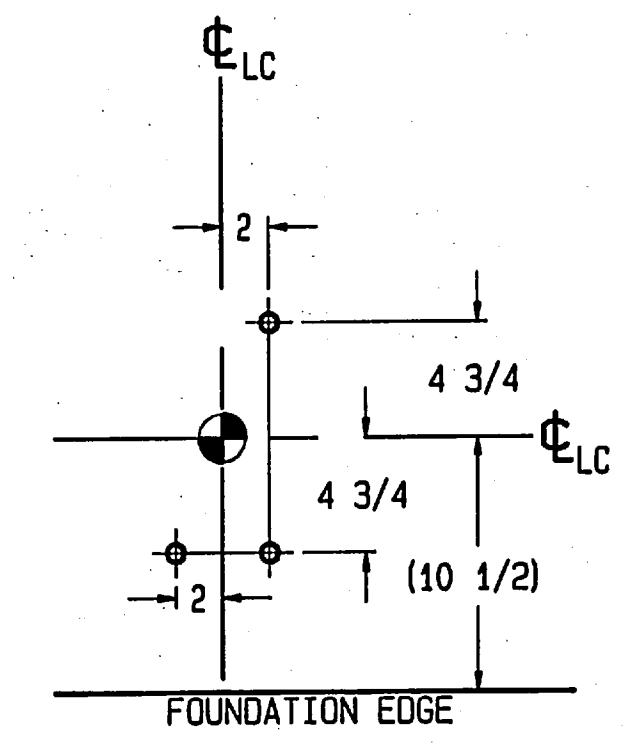
REV	CHANGE	BY	DATE	SCALE	DATE	APPD	REV
				SCALE .02	10/08/09		
				DATE			
				DRN ADF	APPR		
				TITLE VTC221 FDN, VARIABLE FOOTER, 70' X 10' (3-MODULE) W/ RISER OPTION			
				UNLESS OTHERWISE SPECIFIED, ALL DIMENSIONS ARE IN INCHES, AND DIMENSIONAL TOLERANCES ARE:			
				FRACTIONAL DECIMAL ANGULAR			
				1/32 .XX .02 .5"			
				.XXX .005			
				TC207841			



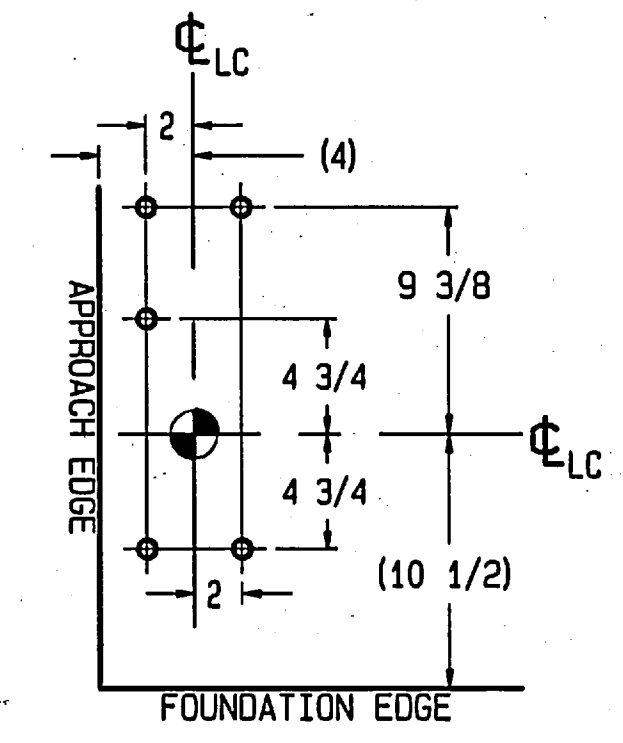
PLAN VIEW



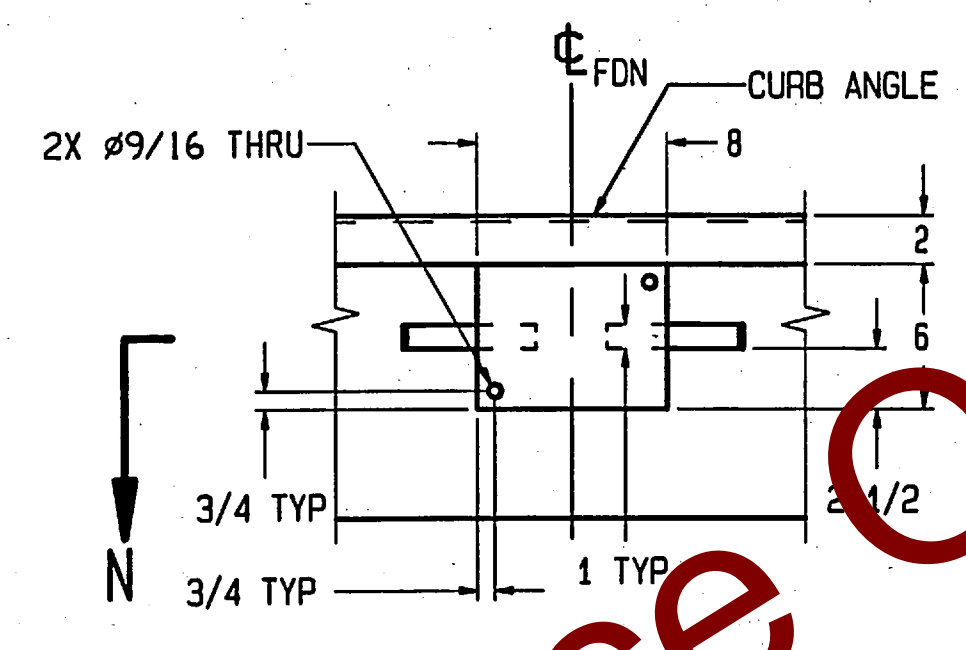
SECTION A-A



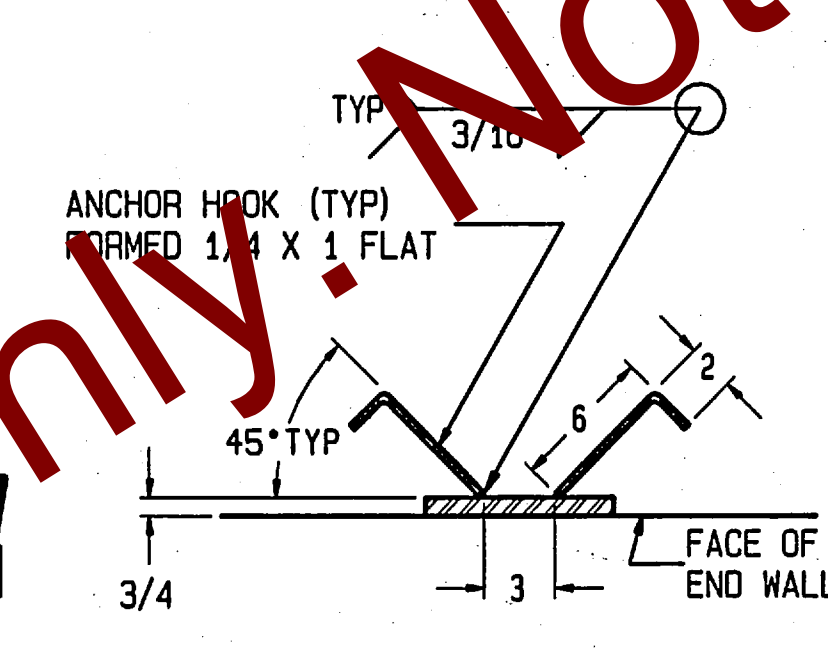
DETAIL "L"
ANCHOR LOCATIONS
(OTHER SIDE IS OPPOSITE)



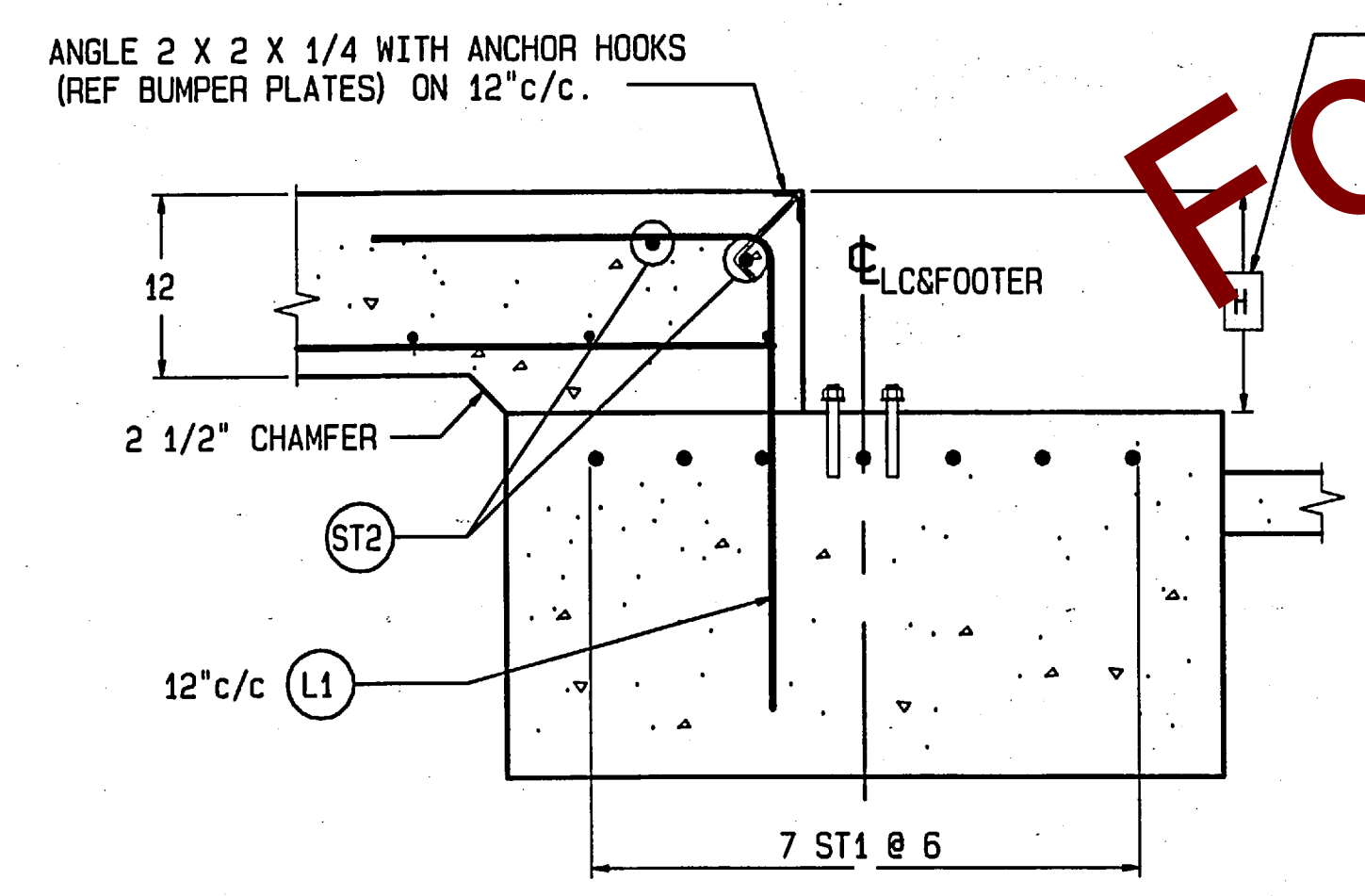
DETAIL "K"
ANCHOR LOCATIONS
(OTHER SIDE IS OPPOSITE)



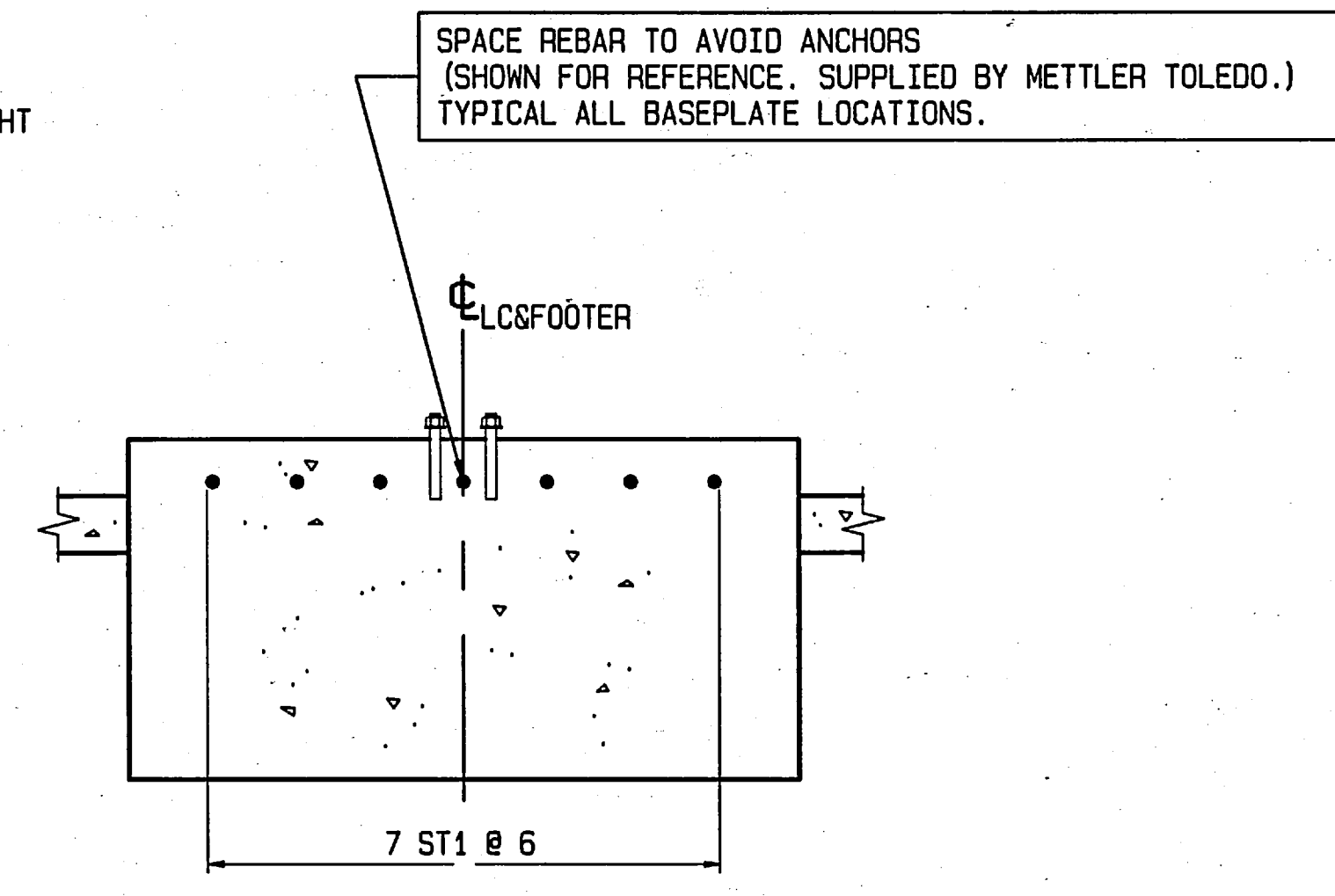
VIEW J-J
BUMPER PLATE ASSEMBLY (ONE EACH END)
MATERIAL: A.R. STEEL (BY OTHERS)



SECTION N-N
SCALE: 1/8



SECTION C-C
SCALE 1/12
(TYPICAL END WALL)



SECTION D-D
SCALE 1/12
(TYPICAL FOOTER)
SINGLE BASEPLATE